

# SynSisal<sup>®</sup>

Lookbook





# Contents

4	Sisal Without Limits
12	Sustainability
14	SynSisal® Signature Collection
20	Astoria
22	Langley
24	Medina
26	Ravenna
28	Winthrop
31	SynSisal® Signature Specifications
32	Workspace
36	Hospitality + Resort
42	Store Design
46	Residential
48	SynSisal® Tile Collection
52	The Sisal Mirage
54	Installing SynSisal® Tile
57	SynSisal® Tile Specifications



sisal  
without  
limits 

# Reimagining THE CLASSIC SISAL LOOK with new materials.

When we launched our **SynSisal® Signature** collection in 2020, our vision has always been “sisal without limits”—to capture the beloved organic texture, warmth, and character of sisal carpet with low-impact technical materials, freeing it from the performance limitations of natural fiber.

Since then, **SynSisal® Signature** has become the premier option for designers looking to bring sisal-look rugs and carpet to demanding commercial settings including lobbies, conference and guest rooms, and staircases.

Now, that vision expands.

**SynSisal® Tile** opens the collection into a modular format—creating new possibilities for large-scale commercial and hospitality spaces where flexibility and ease of installation matter as much as design.



Inspired by natural beauty





Craftsmanship in every detail





Performance built to last



# SUSTAINABLY CRAFTED

made with **ECONYL**<sup>®</sup>  
ENDLESS POSSIBILITIES

Sustainability is at the core of our philosophy. We craft enduring, high-performance floor coverings from low-impact materials, balancing environmental responsibility with refined, natural aesthetics.

That's why SynSisal<sup>®</sup> is made using 100% recycled or regenerated technical materials.

Both our SynSisal<sup>®</sup> Signature and Tile collections are made using 100% ECONYL<sup>®</sup> regenerated nylon yarns sourced from old nylon carpet scraps, post-consumer waste, and fishing nets recovered from our oceans.

 **sisal without limits**

# SynSisal<sup>®</sup> Signature

Astoria  
Langley  
Medina  
Ravenna  
Winthrop

Custom Rug Borders



# SynSisal® Signature

Our Signature SynSisal® collection consists of five naturally beautiful flatwoven structures, available in custom area rugs and carpet.

SynSisal® Signature is made with ECONYL® regenerated nylon fibers that are intrinsically stain-resistant and designed for heavy contract applications.

**Sisal-look**  
**Heavy Contract, Class 33**  
**Made with ECONYL®**

**Stain-resistant**  
**Soft underfoot**  
**Stocked in the US & EU**

## 5 Classic Sisal Structures



Astoria



Langley



Medina



Ravenna



Winthrop

# Where high design meets low impact.

Our five SynSisal® Signature weaves deliver sustainable performance with ECONYL® 100% regenerated nylon—made from old nylon carpet scraps, discarded fishing nets and fabric scraps.

The result: a lower-impact, contract-grade synthetic alternative to natural sisal.

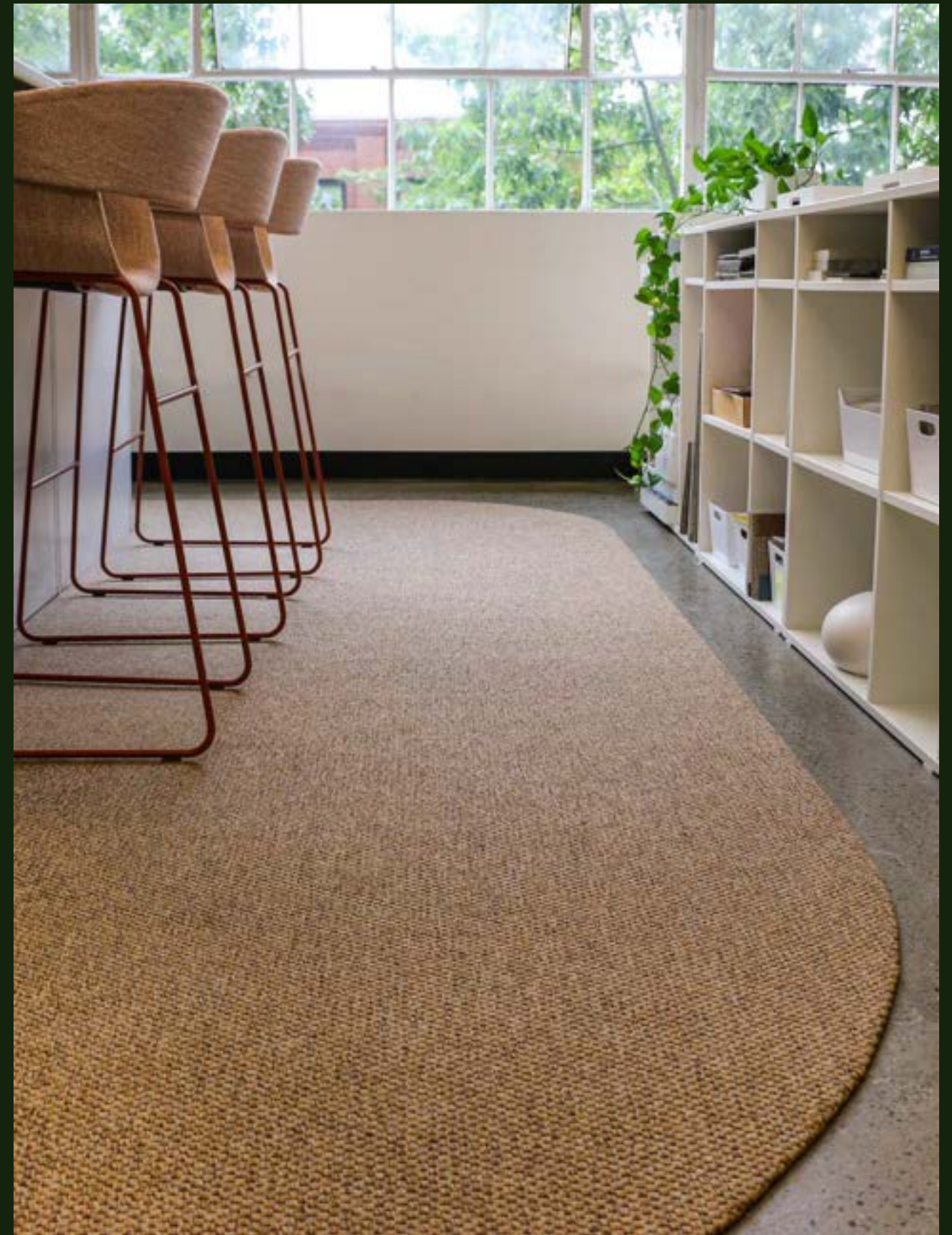
Made using 100% regenerated ECONYL®

Declare® LBC Red List Free

Blue Angel certified (DE-UZ 128)

Contributes to LEED v4 / v4.1 EQc2 requirements

Supports BREEAM Hea 02 exemplary level criteria



# Astoria

A sophisticated, modern herringbone pattern that brings movement and character. An excellent choice for high-traffic living areas, stairs, boutique retail spaces, and commercial spaces.



Harvest



Honey



Cedar



Mesquite



Smoke



Bark



Mink

# Langley

Thick yarns contribute dimension, stability, and texture to this organic structure.

Langley offers comfort underfoot, a glamorous tiger-eye pattern, and easy maintenance.



Langley | Mesquite  
Design Well Spent | Seattle, WA



Harvest



Honey



Cedar



Mesquite



Smoke



Bark



Mink

# Medina



Refined and timeless, this tight loop bouclé offers rich texture and supreme durability.

Hotel lobbies, boutique retail spaces, offices, and residences will benefit from Medina's organic beauty, low maintenance, and versatile neutral colorways.

Medina | Bark  
Knotel Old Sessions House | London, United Kingdom



Harvest



Honey



Cedar



Mesquite



Smoke



Bark



Mink

# Ravenna

Commonly referred to as a Panama pattern, Ravenna's basketweave structure adds depth and texture with interlaced one-over-one threads of yarn. Beautiful yet strong enough for bustling residential, hospitality, or commercial spaces.



Harvest



Honey



Cedar



Mesquite



Smoke



Bark



Mink

# Winthrop

A classic sisal design with thick yarns woven into irregular loops, creating a refined rib pattern.

Winthrop fits seamlessly into a variety of interior styles and can act as a neutral foundation on which to layer other design elements.



Harvest



Honey



Cedar



Mesquite



Smoke



Bark



Mink

# SynSisal® Signature | Specifications



## Product Overview

<b>Product Type</b>	Carpet and Rug
<b>Recommended Use</b>	Indoor, Heavy Contract, Class 33
<b>Pile Material</b>	ECONYL® PA6, Regenerated Nylon
<b>Roll Width</b>	13' 2" or 4 m
<b>Country of Origin</b>	Europe

## Construction

<b>Production Method</b>	Woven
<b>Weave Structure</b>	Loop Pile / Fine Bouclé
<b>Pile Weight</b>	51 oz/yd <sup>2</sup> or 1210 g/m <sup>2</sup>
<b>Total Height</b>	3/16" or 5 mm
<b>Total Weight</b>	86.9 oz/yd <sup>2</sup> or 2,200 g/m <sup>2</sup>
<b>Primary Backing</b>	XBR Latex
<b>Secondary Backing</b>	Textile / Actionbac™

## Performance

<b>Use Class</b>	Indoor, Heavy Contract, Class 33
<b>Fire Rating</b>	Bfl-s1 / Cfl-s1
<b>Cleanability</b>	Easy to clean
<b>Castor Chair Suitability</b>	Intensive use
<b>Stair Suitability</b>	12,000-4
<b>Anti-static Behavior</b>	Xd .82-Xw .60
<b>Color Fastness to Light</b>	7-8
<b>Impact Sound</b>	IIC62
<b>Hexapod</b>	12,000-4
<b>Noise Reduction Coefficient</b>	SAA .23
<b>Thermal Resistance</b>	R-value: 0.13-0.14



# Workspace



Langley | Mink  
Design Well Spent | Seattle, WA



Medina | Cedar  
Vegamour Offices | Los Angeles, CA

Langley | Mesquite  
Design Well Spent | Seattle, WA





Medina | Bark  
Knotel Old Sessions House | London, United Kingdom

# Hospitality + Resort



Ravenna | Harvest  
Hotel Lobby



Langley | Honey



Astoria | Honey  
The Bull | Charlbury, United Kingdom

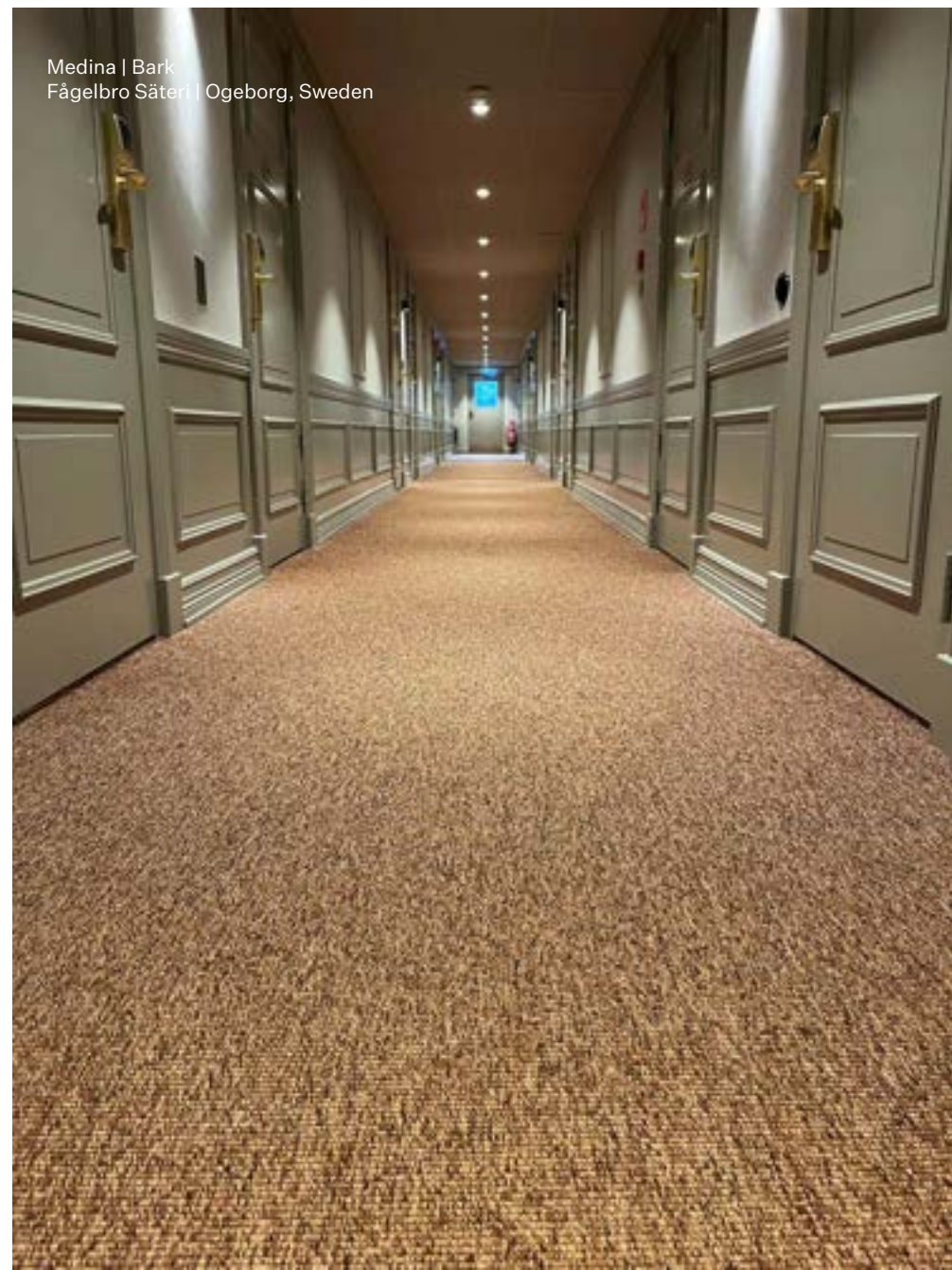




Medina | Bark  
Hotel Lobby Large Runner

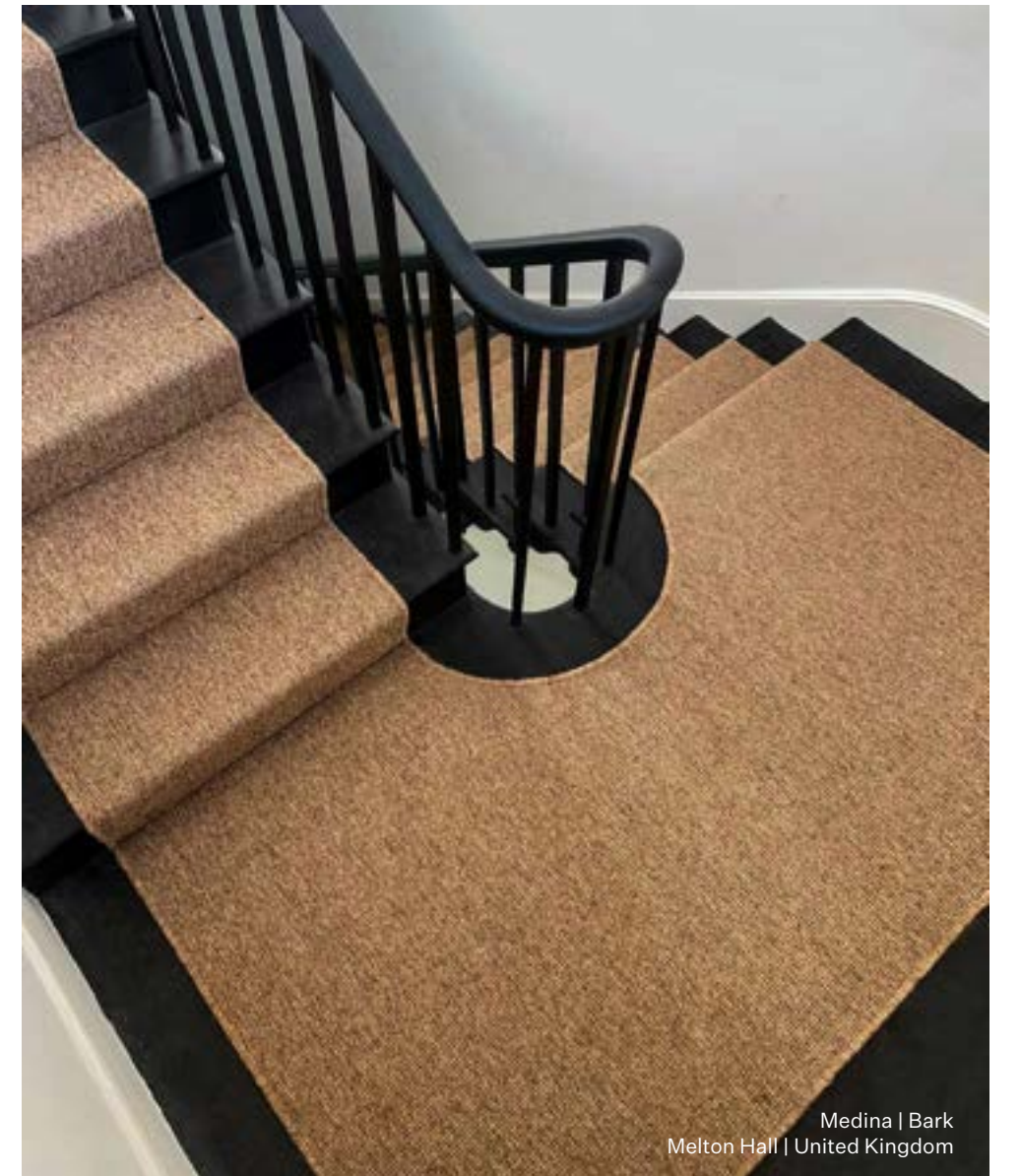


Astoria | Mink  
Dunluce Lodge | Portrush, Ireland



Medina | Bark  
Fågelbro Säteri | Ogeborg, Sweden





Medina | Bark  
Melton Hall | United Kingdom

Medina | Bark  
Hotel Restaurant | Australia



Medina | Bark  
Hotel Lobby | New York, NY



Medina | Cedar  
Chandon Club Lounge | Yountville, CA

# Store Design



Astoria | Mink  
Global Retailer



Langley | Bark  
Global Retailer



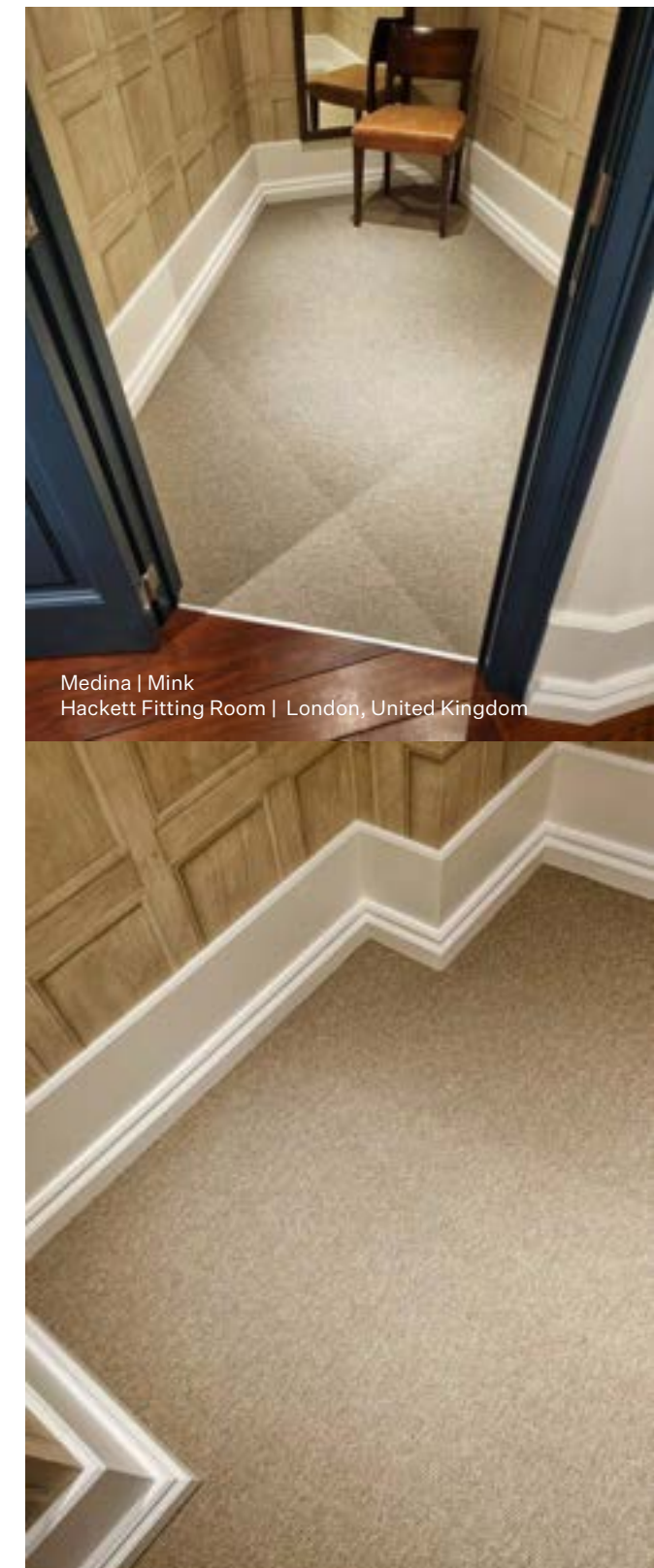
Medina | Mesquite  
Hackett | London, United Kingdom



Astoria | Mesquite  
Hackett | London, United Kingdom



Astoria | Mink  
Global Retailer



Medina | Mink  
Hackett Fitting Room | London, United Kingdom



Langley | Bark  
Global Retailer

# Residential



Ravenna | Honey  
Living Room | Residential



Astoria | Honey  
Living Room | Residential



Astoria | Mesquite  
Brian Paquette Interiors | Seattle, WA



Winthrop | Bark  
Special cut-out rug | Residential



# SynSisal<sup>®</sup> Tile



Ridge



# SynSisal® Tile Ridge

SynSisal® Tile opens the collection into a modular format—creating new possibilities for large-scale commercial and hospitality spaces where flexibility and ease of installation matter as much as design.

Designed to replicate the pattern of tight-woven sisal bouclé, Ridge is our first SynSisal® Tile structure, bringing subtle linear depth and dimension to a modular sisal-look tile fit for commercial spaces.

**Natural sisal-look**  
**Modular**  
**Heavy Contract, Class 33**  
**Self-stick installation**

**Easy to clean**  
**Soft underfoot**  
**Made with ECONYL®**  
**Stocked in US & EU**



Ridge | Honeycomb  
Lobby | Seattle, WA

## 4 Classic Tones



Honeycomb



Pebble



Shale



Walnut



Ridge | Honeycomb  
Conference Room | Seattle, WA

# The sisal mirage. See texture in a new light.

Modular by design, SynSisal® Tile conjures texture through optical mirage: a ribbed, dimensional surface that reveals its full effect once it repeats across the floor, where it becomes indistinguishable from natural sisal.

It is not an illusion—it is an invitation to bring the striated earth tones and intricate depth of woven fiber to heavily trafficked commercial environments. Forget natural limitations. With SynSisal® Tile, seeing is believing.



# Responsible materials. Proven performance.

Made using 100% regenerated ECONYL® yarns and a recyclable PES backing.

Blue Angel certified (DE-UZ 128)

Eligible for LEED points

Miljöbyggnad Gold & Bronze ratings

BREEAM-SE exemplary level  
(Hea O2 Indoor air quality)

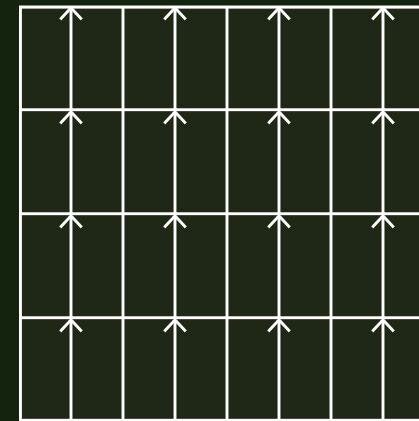


# Installation Simplified. Just place and press.

With a self-adhesive backing, save time and money on installation.  
Replacing a single tile takes just seconds and can be done by anyone.



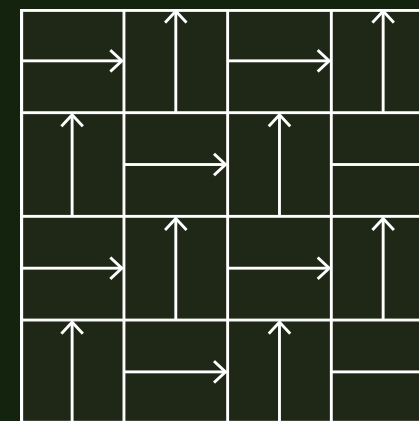
## Installation Patterns



### Monolithic

A continuous wall-to-wall look.

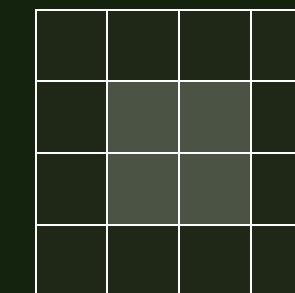
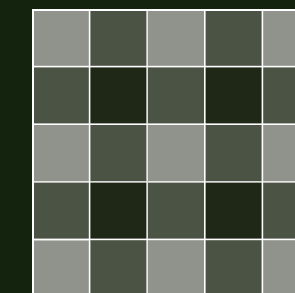
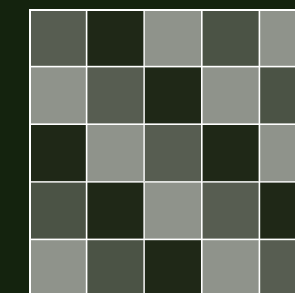
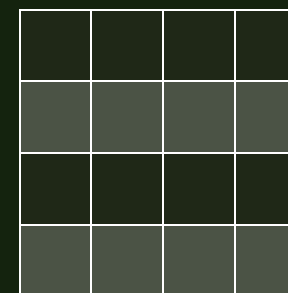
Row-to-row alignment: When tiles are placed next to each other, the pattern aligns seamlessly, with each individual bouclé row lining up with the corresponding row in the adjacent tile. If rows are misaligned, rotate the tile 180° to restore proper row alignment and continue the pattern.



### Quarter Turn

All square carpet tiles can be installed in a quarter-turn layout for a checkered effect.

Mix tile colors to create unique, beautiful patterns.





SynSisal®



# Tile | Specifications

## Product Overview

Product Type	Tile
Recommended Use	Indoor, Heavy Contract, Class 33
Pile Material	ECONYL® PA6, Regenerated Nylon
Tile Size	50 × 50 cm   19.7" × 19.7"
Country of Origin	Germany

## Construction

Production Method	Tufted
Weave Structure	1/10" loop, printed
Tile Weight	approx. 1.2 lbs or 0.5 kg
Weight per Box	11.5 kg or 25.4 lbs
Total Height	6.5 mm (0.26" approx.)
Total Weight	approx. 2,720 g/m <sup>2</sup> (approx. 8.91 oz/ft <sup>2</sup> )
Tiles per Box	20

## Performance

Secondary Backing	100% recyclable PES with self-stick adhesive
Use Class	Indoor, Heavy Contract, Class 33
Fire Rating	Bfl-s1
Cleanability	Easy to clean
Castor Chair Suitability	Yes
Stair Suitability	Not suitable for stairs
Color Fastness to Light	≥ 5
Rubbing Fastness to Water	≥ 4
Rubbing Fastness to Color	≥ 4
Sound Absorption	aw: 0.20
Impact Sound Improvement	approx. 27 dB



Bring warmth to  
commercial spaces

A modern dressing room with modular utility for everyday performance. The room features several dressing stations, each with a white pillar and a brown curtain hanging from a gold-colored rod. A long, light-colored cushioned bench is positioned in the foreground. The floor is covered in a light-colored carpet. The walls are white with a dark wood baseboard. A large, arched mirror is visible on the right wall, and a small, gold-colored stool is placed near the base of the pillar. The lighting is warm and ambient, with a pendant light hanging from the ceiling. The overall aesthetic is clean, minimalist, and functional.

Modular utility for  
everyday performance

**sisal**  
**without**  
**limits** 

